

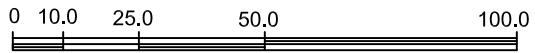
**PLAN OF PROPOSED SUBDIVISION OF PART OF  
LOT 6, BLOCK 2, SECTION 5, TOWNSHIP 6,  
COMOX DISTRICT, PLAN 1818**

Subdivision within the A.L.R.

ALC File #51888, Resolution # 127/2011

Civic Address : 3557 Winn Road, Merville, B.C.

SCALE 1:1,500 metric

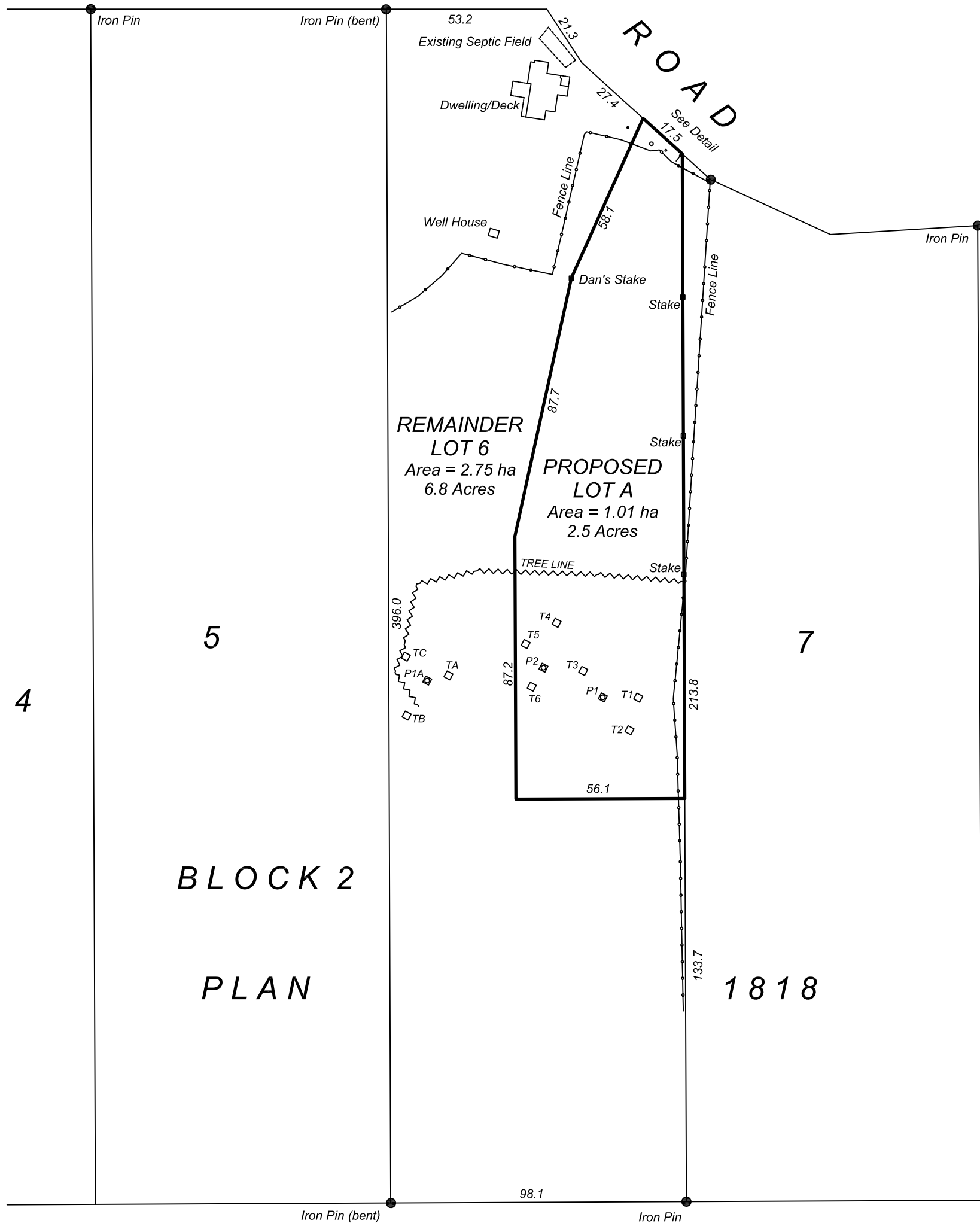
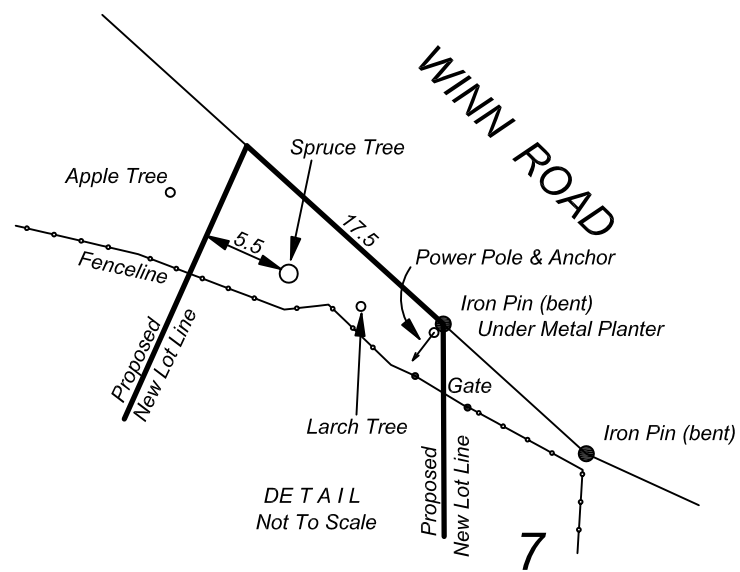


ALL DISTANCES ARE IN METRES AND DECIMALS THEREOF

The intended plot size of this plan is 280 mm in width by 432 mm in height (11" x 17")  
when plotted at a scale of 1:1,500

T<sup>3</sup> □ INDICATES TEST HOLE

P<sup>1</sup> □ INDICATES PERC. HOLE



Date: Oct. 5, 2011

CHICALO BURRIDGE LAND SURVEYING  
and GEOMATICS Ltd.  
#2 - 1330 DOGWOOD STREET,  
CAMPBELL RIVER, BC. V9W 3A6  
Phone : (250) 287-4865 Fax : (250) 287-9502  
File : 11014 Major Jobs\dwg\11014P3.dwg